



---

## **IBIS DMNG Mode Selection**

Digital Mobile News Gathering

*Date: 7th September 2011*

**Confidentiality Notice**

*This document and the information contained in it is the property of AVIWEST. It must not be copied, disclosed, reproduced or transmitted whether in whole or in part, without AVIWEST's prior written agreement.*

**TABLE OF CONTENTS**

<b>1</b>	<b>INTRODUCTION .....</b>	<b>3</b>
<b>2</b>	<b>GENERAL PRESENTATION .....</b>	<b>4</b>
2.1	OVERVIEW .....	4
<b>3</b>	<b>SELECTING THE RIGHT MODE .....</b>	<b>5</b>
3.1	CAMERA .....	6
3.2	IBIS DMNG.....	7
3.3	SERVER STUDIO .....	8

## 1 Introduction

This user guide is written for the users of the IBIS DMNG to assist in installation and operation.

This User Guide is not intended to be a detailed source of information.



**CAUTION**

Unauthorized maintenance or the use of non-approved replacements may affect the equipment specification and invalidate any warranties.

## 2 General Presentation

### 2.1 Overview

Currently, two different scanning techniques are available to render video, interlaced scanning and progressive scanning. Also, two different resolutions classes are available to capture video, standard definition (SD) or high definition (HD) resolution. Because of these options, to ensure the highest quality video, it's essential to ensure that the following component's configuration parameters are all in sync:

1. Camera
2. IBIS DMNG
3. Vazzt Studio Server

The typical result of an incorrect configuration parameter is stuttering/jitter video and/or viewable scan lines within the video.

The following steps detail how to ensure the system is configured correctly.

## 3 Selecting the Right Mode

To ensure that the IBIS DMNG system displays video in the highest quality it's essential to ensure that the following component's configuration parameters are all in sync:

1. Camera
2. IBIS DMNG
3. Vazzt Studio Server

### 3.1 Camera

The decision regarding whether HD or SD is used and whether interlaced or progressive scanning is used typically starts at the camera. Every camera has different modes available and the way the mode is configured is camera specific.

For example, with the Panasonic AG-HPX170P camera, the modes below can be set:

Label on Camera	Format	Output Frame rate (fps)	IBIS Video Mode	Typical Use
<b>1080i/60i</b>	<b>HD 1080</b>	<b>60 interlaced</b>	<b>INTERLACED</b>	<b>Interlaced Broadcast HD Video</b>
<b>1080i/30P</b>	<b>HD 1080</b>	<b>30 progressive</b>	<b>PROGRESSIVE</b>	<b>Progressive Broadcast HD Video</b>
1080i/24P	HD 1080	24 progressive	PROGRESSIVE	Film Like HD Video
1080i/24PA	HD 1080	24 progressive advanced	PROGRESSIVE	Film Like HD Video storing to DV Tape
<b>720P/60P</b>	<b>HD 720</b>	<b>60 progressive</b>	<b>PROGRESSIVE</b>	<b>Progressive Broadcast HD Video</b>
720P/30P	HD 720	30 progressive	PROGRESSIVE	Progressive Broadcast HD Video
720P/24P	HD 720	24 progressive	PROGRESSIVE	Film Like HD Video
720P/30PN	HD 720	30 progressive native	PROGRESSIVE	Progressive Broadcast HD Video storing to P2 Memory Cards
720P/24PN	HD 720	24 progressive native	PROGRESSIVE	Film Like HD Video storing to P2 Memory Cards
<b>480i/60i</b>	<b>SD</b>	<b>60 interlaced</b>	<b>INTERLACED</b>	<b>Interlaced Broadcast SD Video</b>
<b>480i/30P</b>	<b>SD</b>	<b>30 progressive</b>	<b>PROGRESSIVE</b>	<b>Progressive Broadcast SD Video</b>
480i/24P	SD	24 progressive	PROGRESSIVE	Film Like SD Video
480i/24PA	SD	24 progressive advanced	PROGRESSIVE	Film Like HD Video storing to DV Tape

Table 1: AG-HPX170P Camera Modes

The rows highlighted in blue are the recommended modes. The exact mode selected depends on the standard of your video distribution network (HD 1080, HD 720, or SD) and whether interlaced or progressive is required.

Note "Film Like Video" refers to video that looks like it was shot with a film based camera, giving the video a theatrical feel.

### 3.2 IBIS DMNG

The IBIS DMNG needs to be configured to match the scan mode of the camera. This is done using the IBIS DMNG touch screen interface.

1. Power on the box
2. Press the following buttons to navigate to the video *SELECT MODE* menu

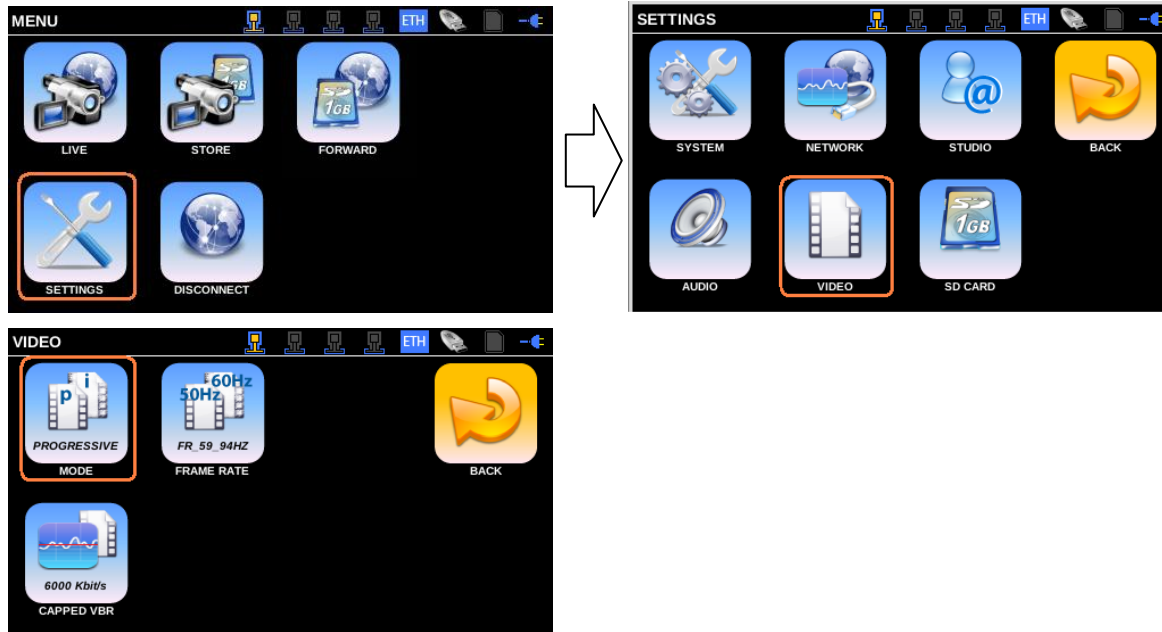


Figure 1: Navigating to video *SELECT MODE* menu

3. Select the video mode the IBIS should use. The mode should match the configuration of the camera set in the previous section. For example, for the modes available on the Panasonic AG-HPX170P, the corresponding IBIS Video mode can be found under the column "IBIS Video Mode."

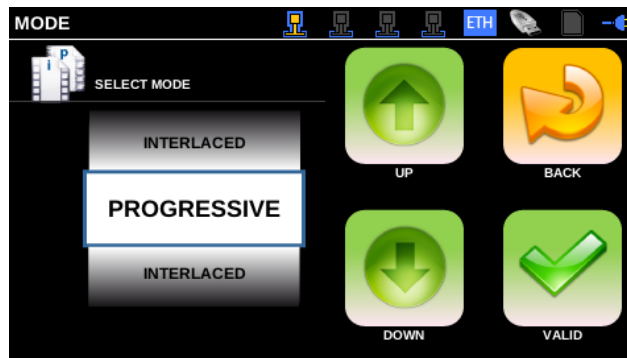


Figure 2: Changing Video Mode

4. When the IBIS is set to the correct video mode, push the *VALID* button to save.

### 3.3 Server Studio

The Vazzt Studio Server can be configured to output three different types of video modes through the SDI output interface. These modes are SD, 720P, and 1080i. The Vazzt Studio Server should match the configuration of the video distribution network and typically matches the configuration of the camera and IBIS DMNG (although this is not required).

1. Double click the Ibis Studio desktop icon.



Figure 3: Ibis Studio desktop icon

2. The Ibis Studio will now display all live video that is being sent to the IBIS Studio from IBIS DMNG(s).

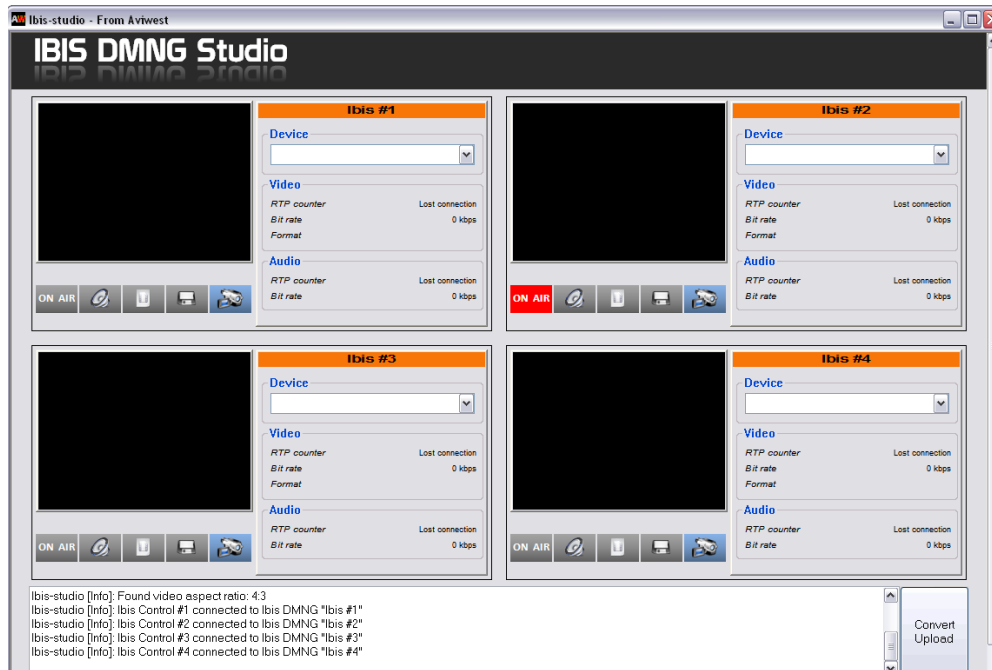


Figure 4: IBIS DMNG Studio

## IBIS DMNG Mode Selection

3. By default the Ibis Studio is configured to disable HD SDI output. To allow HD, right click the AviWest Icon in the windows system tray and select the *Configure...* option.

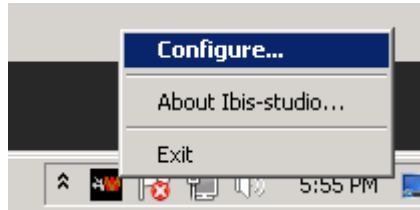


Figure 5: AviWest System Tray Dialog

4. Select the checkbox label *HD Allowed*

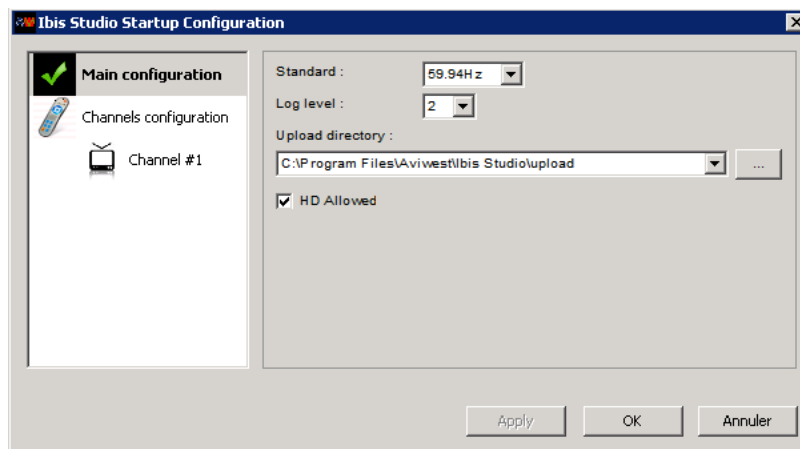


Figure 6: IBIS Studio Startup Configuration

5. Click *OK*
6. Restart the IBIS Studio application by double clicking the Ibis Studio desktop icon.

## IBIS DMNG Mode Selection

- Now the output of the SDI device will be selectable

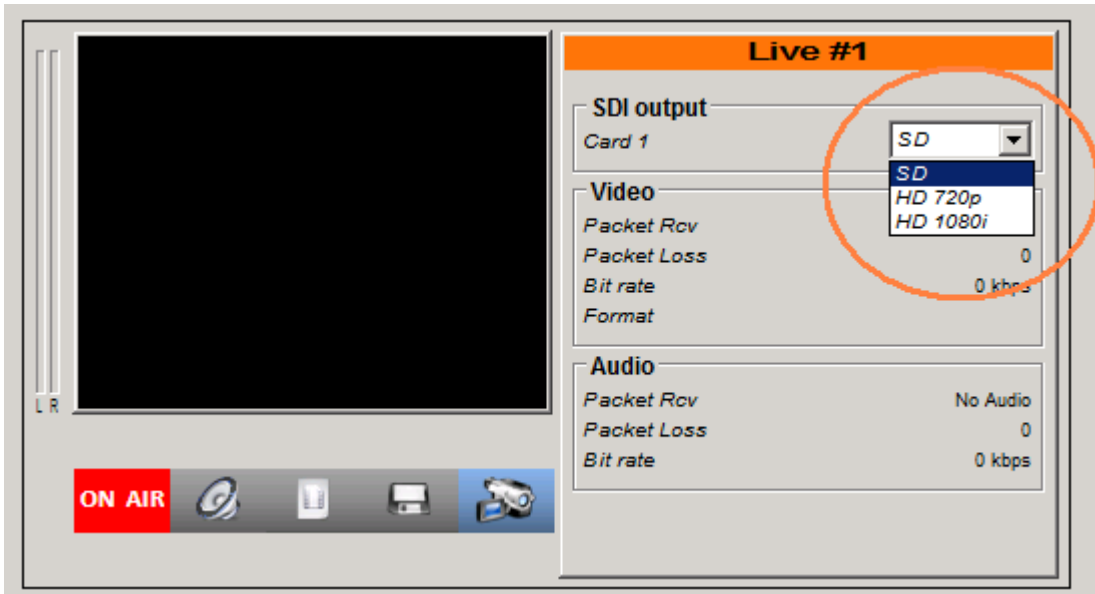


Figure 7: SDI output mode can now be changed

- Change the output of the Vazt Studio Server SDI output to match your video distribution network.



# KenCast

KenCast, Inc.

290 Harbor Drive

Stamford, CT 06902-8703

U.S.A.

**Tel:** (203) 359-6984

**Fax:** (203) 359-2173

**Technical Support:** [support@kencast.com](mailto:support@kencast.com)

**Information:** [fazzt@kencast.com](mailto:fazzt@kencast.com)

**Web Site:** [www.kencast.com](http://www.kencast.com)